

# CONCRETE BATCHING PLANTS & OTHER PRODUCTS

Stabilization Plants • Concrete Recycling Plants • Trailer Type Concrete Pumps



VITA  
GLOBAL







# MOBILE MASTER SERIES


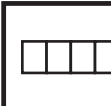



## Mobile Concrete Batching Plants



**OPTIONS**

**Mixer Types**

|   |   |   |   |
|---|---|---|---|
|  |  |  |  |
| Pan   | Planetary   | Single Shaft  | Twin Shaft  |

|   |   |   |   |   |
|---|---|---|---|---|
| <b>Aggregate Bin Types</b>  |   | <b>Production Types</b>   |   | <b>Aggregate Transfer Types</b>   |
|  |  |  |  |  |
| Square  | Inline  | Dry   | Wet   | Conveyor  |

### MODELS

- Mobile Master-30 Eagle
- Mobile Master-60 Pegasus
- Mobile Master-60 Bear
- Mobile Master-60 Panthera
- Mobile Master-100 Lion / Lion+
- Mobile Master-135 Jaguar
- Mobile Master-150 Elephant

## Mobile Master Series

VITA Mobile Master Series mobile concrete batching plants were designed to fulfill flexibility and mobility requirements especially for the construction companies need to change the location of their concrete batching plants regularly depending on their ongoing projects. Besides that, nowadays ready mix companies also prefer to have maximum mobility for supplying concrete to their customers wherever they want and minimize concrete transportation costs with putting a concrete batching plant close to their customer's site. Therefore, there should be a concrete batching plant which has easy transportation, short assembly and disassembly advantages.

VITA mobile concrete batching plants provide all these advantages as their main components are designed on a mono-block chassis which has axle and tires. Thanks to this ultimate design, the main unit of A VITA mobile concrete batching plant can be transported by only 1 unit truck trailer. Installation of a mobile concrete batching plant only takes 1-2 days.

VITA has the widest capacity range for mobile concrete batching plants in the market, which are from 30 m<sup>3</sup>/h to 150 m<sup>3</sup>/h.



### Easy and Cost-Effective Transportation

Main components equipped on a monoblock chassis can be transported with one truck trailer.



### Quick Installation and Start Up Period (1-2 days)

Main modules and cables are preinstalled in VITA factories to ensure easy and quick assembly on site.



### Minimum Area Requirement for Installation

Variable installation configurations thanks to the special design.



### Simple Foundation Requirement

All components will be installed on ground level (zero level).



### High Quality and Precise Concrete Production

Fully Automated Computerized Control System (SCADA).



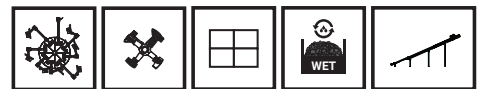
### Widest Product Range

From 30 to 150 m<sup>3</sup>/h capacity with different mixer types.

# MOBILE MASTER-30 EAGLE



# 30 $m^3/h$



## TECHNICAL SPECIFICATIONS

|                                       |                    |
|---------------------------------------|--------------------|
| Capacity                              | 30 $m^3/h$         |
| Aggregate Storage Bins Capacity       | 4 x 10 $m^3$       |
| Aggregate Weighing Capacity           | 1250 kg            |
| Agregate Loading Type Into Mixer      | Transfer Conveyor  |
| Mixer Capacity                        | 750 / 500 l        |
| Mixer Type                            | Pan / Single Shaft |
| Cement Weighing Capacity              | 300 kg             |
| Water Weighing Capacity               | 200 kg             |
| Additive Weighing Capacity            | 2 x 15 l           |
| Control System                        | SIEMENS or ABB     |
| Cement Screw Diameter ( $\emptyset$ ) | 165 mm             |



# MOBILE MASTER-60



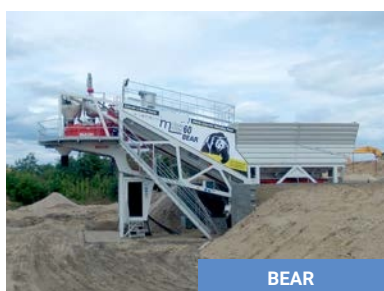
PEGASUS



# 50 m<sup>3</sup>/h

## TECHNICAL SPECIFICATIONS

|  |                             |
|--|-----------------------------|
| Capacity                                   | 50 m <sup>3</sup> /h        |
| Aggregate Storage Bins Capacity            | 4 x 13,5 m <sup>3</sup>     |
| Aggregate Weighing Capacity                | 2500 kg                     |
| Aggregate Loading Type Into Mixer          | Transfer Conveyor           |
| Mixer Capacity                             | 1500 / 1000 l               |
| Mixer Type                                 | Pan / Planetary / Twinshaft |
| Cement Weighing Capacity                   | 600 kg                      |
| Water Weighing Capacity                    | 300 kg                      |
| Additive Weighing Capacity                 | 2 x 25 l                    |
| Control System                             | SIEMENS or ABB              |
| Cement Screw Diameter (Ø)                  | 220 mm                      |
| Built in Cement Silo (only for Bear model) | 36 tons                     |



BEAR



PANTHERA

# MOBILE MASTER-100 LION / LION+



## 90-100\* m<sup>3</sup>/h



### TECHNICAL SPECIFICATIONS

|                                  |                                     |
|----------------------------------|-------------------------------------|
| Capacity                         | 90 - 100* m <sup>3</sup> /h         |
| Aggregate Storage Bins Capacity  | 4 x 22,5 m <sup>3</sup>             |
| Aggregate Weighing Capacity      | 5000 kg - 6250 kg *                 |
| Agregate Loading Type Into Mixer | Transfer Conveyor                   |
| Mixer Capacity                   | 3000 / 2000 l or<br>3750 / 2500 l * |
| Mixer Type                       | Twin Shaft                          |
| Cement Weighing Capacity         | 1300 kg or 1450 kg *                |
| Water Weighing Capacity          | 600 kg or 750 kg *                  |
| Additive Weighing Capacity       | 2 x 25 l                            |
| Control System                   | SIEMENS or ABB                      |
| Cement Screw Diameter (Ø)        | 273 mm                              |



# MOBILE MASTER-135 JAGUAR



# 110 $m^3/h$



## TECHNICAL SPECIFICATIONS

|                                       |                   |
|---------------------------------------|-------------------|
| Capacity                              | 110 $m^3/h$       |
| Aggregate Storage Bins Capacity       | 4 x 22,5 $m^3$    |
| Aggregate Weighing Capacity           | 6600 kg           |
| Agregate Loading Type Into Mixer      | Transfer Conveyor |
| Mixer Capacity                        | 4500 / 3000 l     |
| Mixer Type                            | Twin Shaft        |
| Cement Weighing Capacity              | 1600 kg           |
| Water Weighing Capacity               | 900 kg            |
| Additive Weighing Capacity            | 2 x 25 l          |
| Control System                        | SIEMENS or ABB    |
| Cement Screw Diameter ( $\emptyset$ ) | 273 mm            |

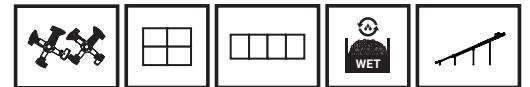




# MOBILE MASTER-150 ELEPHANT



# 150 $m^3/h$



| TECHNICAL SPECIFICATIONS              |                   |
|---------------------------------------|-------------------|
| Capacity                              | 150 $m^3/h$       |
| Aggregate Storage Bins Capacity       | 4 x 30 $m^3$      |
| Aggregate Weighing Capacity           | 9900 kg           |
| Agregate Loading Type Into Mixer      | Transfer Conveyor |
| Mixer Capacity                        | 6750 / 4500 l     |
| Mixer Type                            | Twin Shaft        |
| Cement Weighing Capacity              | 2500 kg           |
| Water Weighing Capacity               | 1100 kg           |
| Additive Weighing Capacity            | 2 x 50 l          |
| Control System                        | SIEMENS or ABB    |
| Cement Screw Diameter ( $\emptyset$ ) | 323 mm            |



# MIX MASTER SERIES

On-Site Concrete Batching Plants



— OPTIONS —

Mixer Types



Pan



Planetary

## MODELS

Mix Master-30

# MIX MASTER-30



# 30 m<sup>3</sup>/h



## TECHNICAL SPECIFICATIONS

|                                   |  |
|-----------------------------------|--|
| Capacity                          | 30 m <sup>3</sup> /h                         |
| Aggregate Storage Bins Capacity   | 2 x 5 m <sup>3</sup> or 4 x 5 m <sup>3</sup> |
| Aggregate Weighing Capacity       | Weighed in the mixer                         |
| Aggregate Loading Type Into Mixer | Transfer Conveyor                            |
| Mixer Capacity                    | 750 / 500 l                                  |
| Mixer Type                        | Pan / Planetary                              |
| Cement Weighing Capacity          | 300 kg                                       |
| Water Weighing Capacity           | 200 kg                                       |
| Additive Weighing Capacity        | 1x25 l                                       |
| Control System                    | Included                                     |
| Cement Screw Diameter (Ø)         | 165 mm                                       |



# QUICK MASTER SERIES

Compact Concrete Batching Plants



**OPTIONS**

**Mixer Types**

|     |           |            |
|-----|-----------|------------|
|     |           |            |
| Pan | Planetary | Twin Shaft |

**Aggregate Bin Types**

|        |        |
|--------|--------|
|        |        |
| Square | Inline |

**Production Types**

|     |     |
|-----|-----|
|     |     |
| Dry | Wet |

**Aggregate Transfer Types**

|          |        |
|----------|--------|
|          |        |
| Conveyor | Bucket |

## MODELS

- MIX-35 Quick Master
- MIX-60 Quick Master
- MIX-90 Quick Master
- MIX-120 Quick Master
- MIX-135 Quick Master
- MIX-160 Quick Master
- MIX-200 Quick Master



**Minimum Area Requirement for Installation**

Due to its compactness, very small area is required for installation. It gives a big opportunity to the users for producing concrete even in very small job sites.



**Linear or Square Type Aggregate Storage Bin Options**

Compact concrete batching plants can be equipped with either square or linear type aggregate storage bins as per the customers' requirement.



**Easy and Cost-Effective Transportation to Overseas**

Compact series were specifically designed to be fitted into minimum quantity of containers to reduce the shipping cost to overseas.

# Compact Concrete Batching Plants

VITA compact concrete batching plants bring a new perspective to the concrete plant as a result of an innovative approach. They are designed to meet the new requirements of rapidly changing and developing construction sector, such as easy and cost-effective transportation requirement.

For this purpose, VITA focused on designing of a compact concrete batching plant which can be fitted into minimum quantity of containers. In this way the transportation cost will be reduced incredibly especially to oversea countries. By managing to put the main unit of an VITA compact concrete batching plant into a 1 unit 40' OT container only, the shipping

costs reduced 3-4 times comparing to their equivalent concrete plants. (Main unit of Elkomix-35 Quickmaster Compact Concrete Batching Plant can be fitted into 1 unit 40' OT container.)

VITA compact type concrete batching plants can be installed even in a very small job sites due to their real compact design.

The main modules of compact concrete batching plants are pre-assembled and the cables are pre-wired in VITA factories before shipment to reduce assembly time significantly. Installation of a compact concrete batching plant only takes 1-2 days.



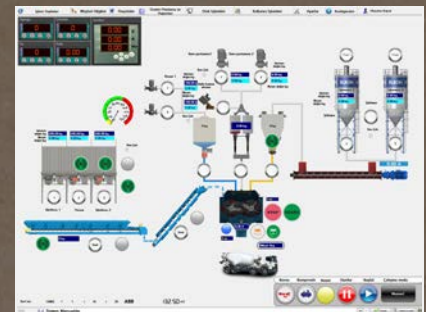
### Simple Foundation Requirement

All components can be installed on a flat concrete surface at zero level ground.



### Quick Installation and Start up Period (1-2 days)

Main modules and cables are preinstalled in VITA factories to ensure easy and quick assembly on site.



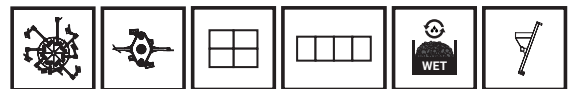
### High Quality and Precise Concrete Production

Due to Fully Automated Computerised Control System, to produce high quality and precise concrete production is very easy.

# MIX-35 QUICK MASTER



# 30 $\text{m}^3/\text{h}$



## TECHNICAL SPECIFICATIONS

|   |  |
|---|--|
| Capacity                                | 30 $\text{m}^3/\text{h}$                     |
| Aggregate Storage Bins Capacity         | 4 x 7,5 $\text{m}^3$ / 3-4 x 10 $\text{m}^3$ |
| Aggregate Weighing Capacity             | 1250 kg                                      |
| Agregate Loading Type Into Mixer        | Aggregate Bucket                             |
| Mixer Capacity                          | 750 / 500 l                                  |
| Mixer Type                              | Pan / Planetary                              |
| Cement Weighing Capacity                | 300 kg                                       |
| Water Weighing Capacity                 | 200 kg                                       |
| Additive Weighing Capacity              | 2 x 15 l                                     |
| Control System                          | SIEMENS or ABB                               |
| Cement Screw Diameter ( $\varnothing$ ) | 165 mm                                       |



# MIX-60 QUICK MASTER



# 55 m<sup>3</sup>/h

## TECHNICAL SPECIFICATIONS

|                                   |   |
|-----------------------------------|---|
| Capacity                          | 50 - 55 m <sup>3</sup> /h                       |
| Aggregate Storage Bins Capacity   | 4 x 15 m <sup>3</sup> / 3-4 x 20 m <sup>3</sup> |
| Aggregate Weighing Capacity       | 2500 kg   |
| Aggregate Loading Type Into Mixer | Aggregate Bucket / Transfer Conveyor            |
| Mixer Capacity                    | 1500 / 1000 l                                   |
| Mixer Type                        | Twin Shaft / Planetary                          |
| Cement Weighing Capacity          | 600 kg  |
| Water Weighing Capacity           | 300 kg  |
| Additive Weighing Capacity        | 2 x 25 l  |
| Control System                    | SIEMENS or ABB                                  |
| Cement Screw Diameter (Ø)         | 220 mm  |





# MIX-90 QUICK MASTER



# 75 m<sup>3</sup>/h



## TECHNICAL SPECIFICATIONS

|                                   |  |
|-----------------------------------|--|
| Capacity                          | 70 - 75 m <sup>3</sup> /h              |
| Aggregate Storage Bins Capacity   | 4 x 20 m <sup>3</sup>                  |
| Aggregate Weighing Capacity       | 3300 kg                                |
| Aggregate Loading Type Into Mixer | Aggregate Bucket/<br>Transfer Conveyor |
| Mixer Capacity                    | 2250 / 1500 l                          |
| Mixer Type                        | Twin Shaft                             |
| Cement Weighing Capacity          | 900 kg                                 |
| Water Weighing Capacity           | 450 kg                                 |
| Additive Weighing Capacity        | 2 x 25 l                               |
| Control System                    | SIEMEN or ABB                          |
| Cement Screw Diameter (Ø)         | 273 mm                                 |



# MIX-120 QUICK MASTER



## 100-110\* m<sup>3</sup>/h

### TECHNICAL SPECIFICATIONS

|                                  |  |
|----------------------------------|--|
| Capacity                         | 100 - 110* m <sup>3</sup> /h           |
| Aggregate Storage Bins Capacity  | 4 x 20 m <sup>3</sup>                  |
| Aggregate Weighing Capacity      | 5000 kg                                |
| Agregate Loading Type Into Mixer | Aggregate Bucket / Transfer Conveyor * |
| Mixer Capacity                   | 3000 / 2000 l or 3375 / 2250 *         |
| Mixer Type                       | Twin Shaft                             |
| Cement Weighing Capacity         | 1300 kg                                |
| Water Weighing Capacity          | 600 kg                                 |
| Additive Weighing Capacity       | 2 x 25 l                               |
| Control System                   | SIEMENS or ABB                         |
| Cement Screw Diameter (Ø)        | 273 mm                                 |



# MIX-135 QUICK MASTER



# 120 m<sup>3</sup>/h



## TECHNICAL SPECIFICATIONS

|                                   |                                      |
|-----------------------------------|--------------------------------------|
| Capacity                          | 120 m <sup>3</sup> /h                |
| Aggregate Storage Bins Capacity   | 4 x 20 m <sup>3</sup>                |
| Aggregate Weighing Capacity       | 6600 kg                              |
| Aggregate Loading Type Into Mixer | Aggregate Bucket / Transfer Conveyor |
| Mixer Capacity                    | 4500 / 3000 l or 5000 / 3330 l       |
| Mixer Type                        | Twin Shaft                           |
| Cement Weighing Capacity          | 1600 kg                              |
| Water Weighing Capacity           | 900 kg                               |
| Additive Weighing Capacity        | 2 x 25 l                             |
| Control System                    | SIEMENS or ABB                       |
| Cement Screw Diameter (Ø)         | 273 mm                               |



# MIX-160 QUICK MASTER



# 140 m<sup>3</sup>/h

## TECHNICAL SPECIFICATIONS

|                                   |                       |
|-----------------------------------|-----------------------|
| Capacity                          | 140 m <sup>3</sup> /h |
| Aggregate Storage Bins Capacity   | 4 x 30 m <sup>3</sup> |
| Aggregate Weighing Capacity       | 8800 kg               |
| Aggregate Loading Type Into Mixer | Transfer Conveyor     |
| Mixer Capacity                    | 6000 / 4000 l         |
| Mixer Type                        | Twin Shaft            |
| Cement Weighing Capacity          | 2200 kg               |
| Water Weighing Capacity           | 1000 kg               |
| Additive Weighing Capacity        | 2 x 50 l              |
| Control System                    | SIEMENS or ABB        |
| Cement Screw Diameter (Ø)         | 323 mm                |



# MIX-200 QUICK MASTER



# 175 m<sup>3</sup>/h



## TECHNICAL SPECIFICATIONS

|                                   |                       |
|-----------------------------------|-----------------------|
| Capacity                          | 175 m <sup>3</sup> /h |
| Aggregate Storage Bins Capacity   | 4 x 30 m <sup>3</sup> |
| Aggregate Weighing Capacity       | 11000 kg              |
| Aggregate Loading Type Into Mixer | Transfer Conveyor     |
| Mixer Capacity                    | 7500 / 5000 l         |
| Mixer Type                        | Twin Shaft            |
| Cement Weighing Capacity          | 2750 kg               |
| Water Weighing Capacity           | 1200 kg               |
| Additive Weighing Capacity        | 2 x 50 l              |
| Control System                    | SIEMENS or ABB        |
| Cement Screw Diameter (Ø)         | 323 mm                |



# MIX SERIES

## Stationary Concrete Batching Plants



**OPTIONS**

**Mixer Types**

|     |           |            |
|-----|-----------|------------|
|     |           |            |
| Pan | Planetary | Twin Shaft |

**Aggregate Bin Types**

|        |
|--------|
|        |
| Inline |

**Production Types**

|     |     |
|-----|-----|
|     |     |
| Dry | Wet |

**Aggregate Transfer Types**

|          |        |
|----------|--------|
|          |        |
| Conveyor | Bucket |

### MODELS

- MIX-60
- MIX-120
- MIX-135
- MIX-160
- MIX-180
- MIX-200
- MIX-240
- MIX DOUBLE MIXER

## Stationary Concrete Batching Plants

VITA has a wide range of stationary concrete batching plants which have production capacity from 60 m<sup>3</sup>/h to 240 m<sup>3</sup>/h with one mixer. In addition to this, the capacity can reach up to 480 m<sup>3</sup>/h in stationary type concrete batching plants with double mixer on the same chassis.

VITA stationary concrete batching plants are mostly preferred for high capacity concrete production requirements, for special projects and for the projects which will take a long time in the same location.

If required, VITA specially locates the stationary type concrete batching plants in limited areas to maximize the benefits of the customer and makes special designs upon customer requests.

VITA stationary type concrete batching plants are the products of VITA's production view which have high quality and advanced technology, which has been submitted as an VITA standard since 1975. VITA stationary type concrete batching plants provide below given advantages to the concrete producers;

- › High Production Performance
- › High Quality and Precise Concrete Production (with Fully Automated Computerized Control System)
- › Different Layout Options according to Customer Requirements
- › Possibility for Different Kinds of Concrete Production with Different Type of Mixers







# MIX-60



# 60 m<sup>3</sup>/h



## TECHNICAL SPECIFICATIONS

|                                  |                                      |
|----------------------------------|--------------------------------------|
| Capacity                         | 60 m <sup>3</sup> /h                 |
| Aggregate Storage Bins Capacity  | 4 x 20 m <sup>3</sup>                |
| Aggregate Weighing Capacity      | 2500 kg                              |
| Agregate Loading Type Into Mixer | Aggregate Bucket / Transfer Conveyor |
| Mixer Capacity                   | 1500 / 1000 l                        |
| Mixer Type                       | Pan / Planetary / Twin Shaft         |
| Cement Weighing Capacity         | 600 kg                               |
| Water Weighing Capacity          | 300 kg                               |
| Additive Weighing Capacity       | 2 x 25 l                             |
| Control System                   | SIEMENS or ABB                       |
| Cement Screw Diameter (Ø)        | 220 mm                               |



# MIX-120



# 100-110\*<sub>m<sup>3</sup>/h</sub>

## TECHNICAL SPECIFICATIONS

|                                   |                                      |
|-----------------------------------|--------------------------------------|
| Capacity                          | 100 - 110* m <sup>3</sup> /h         |
| Aggregate Storage Bins Capacity   | 4 x 30 m <sup>3</sup>                |
| Aggregate Weighing Capacity       | 2 x 2500 kg / 5000 kg                |
| Aggregate Loading Type Into Mixer | Aggregate Bucket / Transfer Conveyor |
| Mixer Capacity                    | 3000 / 2000 l or 3375 / 2250 l *     |
| Mixer Type                        | Pan / Planetary / Twin Shaft         |
| Cement Weighing Capacity          | 1300 kg                              |
| Water Weighing Capacity           | 600 kg                               |
| Additive Weighing Capacity        | 2 x 25 l                             |
| Control System                    | SIEMENS or ABB                       |
| Cement Screw Diameter (Ø)         | 273 mm                               |

# MIX-135



# 135 m<sup>3</sup>/h



## TECHNICAL SPECIFICATIONS

|                                  |                                      |
|----------------------------------|--------------------------------------|
| Capacity                         | 120 - 135 m <sup>3</sup> /h          |
| Aggregate Storage Bins Capacity  | 4 x 30 m <sup>3</sup>                |
| Aggregate Weighing Capacity      | 2 x 3300 kg / 6600 kg                |
| Agregate Loading Type Into Mixer | Aggregate Bucket / Transfer Conveyor |
| Mixer Capacity                   | 4500 / 3000 l or 5000 / 3330 l       |
| Mixer Type                       | Twin Shaft                           |
| Cement Weighing Capacity         | 1600 kg                              |
| Water Weighing Capacity          | 900 kg                               |
| Additive Weighing Capacity       | 2 x 25 l                             |
| Control System                   | SIEMENS or ABB                       |
| Cement Screw Diameter (Ø)        | 273 mm                               |



# MIX-160



# 150 m<sup>3</sup>/h

## TECHNICAL SPECIFICATIONS

|                                   |                       |
|-----------------------------------|-----------------------|
| Capacity                          | 150 m <sup>3</sup> /h |
| Aggregate Storage Bins Capacity   | 4 x 30 m <sup>3</sup> |
| Aggregate Weighing Capacity       | 2 x 4400 kg / 8800 kg |
| Aggregate Loading Type Into Mixer | Transfer Conveyor     |
| Mixer Capacity                    | 6000 / 4000 l         |
| Mixer Type                        | Twin Shaft            |
| Cement Weighing Capacity          | 2200 kg               |
| Water Weighing Capacity           | 1000 kg               |
| Additive Weighing Capacity        | 2 x 50 l              |
| Control System                    | SIEMENS or ABB        |
| Cement Screw Diameter (Ø)         | 323 mm                |



# MIX-180



# 175 $\text{m}^3/\text{h}$



## TECHNICAL SPECIFICATIONS

|                                       |                           |
|---------------------------------------|---------------------------|
| Capacity                              | 175 $\text{m}^3/\text{h}$ |
| Aggregate Storage Bins Capacity       | 4 x 30 $\text{m}^3$       |
| Aggregate Weighing Capacity           | 2 x 4950 kg / 9900 kg     |
| Agregate Loading Type Into Mixer      | Transfer Conveyor         |
| Mixer Capacity                        | 6750 / 4500 l             |
| Mixer Type                            | Twin Shaft                |
| Cement Weighing Capacity              | 2500 kg                   |
| Water Weighing Capacity               | 1100 kg                   |
| Additive Weighing Capacity            | 2 x 50 l                  |
| Control System                        | SIEMENS or ABB            |
| Cement Screw Diameter ( $\emptyset$ ) | 323 mm                    |



# MIX-200



# 200 <sup>m<sup>3</sup>/h</sup>

## TECHNICAL SPECIFICATIONS

|                                   |                             |
|-----------------------------------|-----------------------------|
| Capacity                          | 195 - 200 m <sup>3</sup> /h |
| Aggregate Storage Bins Capacity   | 4 x 30 m <sup>3</sup>       |
| Aggregate Weighing Capacity       | 2 x 5500 kg / 11000 kg      |
| Aggregate Loading Type Into Mixer | Transfer Conveyor           |
| Mixer Capacity                    | 7500 / 5000 l               |
| Mixer Type                        | Twin Shaft                  |
| Cement Weighing Capacity          | 2750 kg                     |
| Water Weighing Capacity           | 1200 kg                     |
| Additive Weighing Capacity        | 2 x 50 l                    |
| Control System                    | SIEMENS or ABB              |
| Cement Screw Diameter (Ø)         | 323 mm                      |



# MIX-240

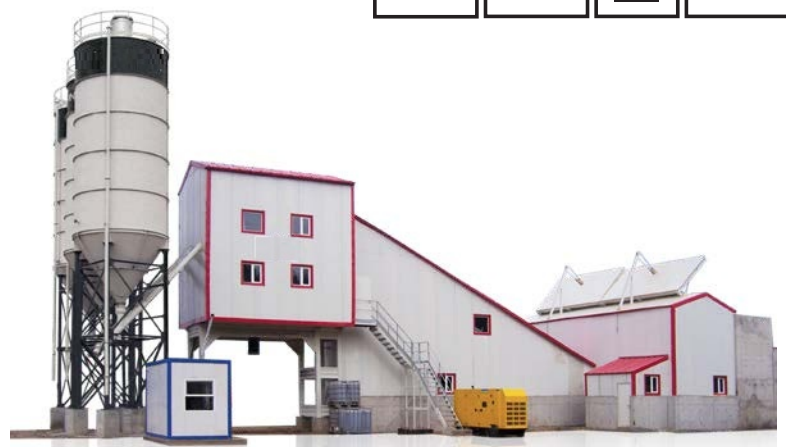


# 240 m<sup>3</sup>/h



## TECHNICAL SPECIFICATIONS

|                                   |                        |
|-----------------------------------|------------------------|
| Capacity                          | 240 m <sup>3</sup> /h  |
| Aggregate Storage Bins Capacity   | 4 x 30 m <sup>3</sup>  |
| Aggregate Weighing Capacity       | 2 x 6600 kg / 13200 kg |
| Aggregate Loading Type Into Mixer | Transfer Conveyor      |
| Mixer Capacity                    | 9000 / 6000 l          |
| Mixer Type                        | Twin Shaft             |
| Cement Weighing Capacity          | 3200 kg                |
| Water Weighing Capacity           | 1800 kg                |
| Additive Weighing Capacity        | 2 x 50 l               |
| Control System                    | SIEMENS or ABB         |
| Cement Screw Diameter (Ø)         | 323 mm                 |



# MIX DOUBLE MIXER



UP TO **480** m<sup>3</sup>/h

- › Equipped with double twinshaft mixer for high production capacity
- › At the same time weighing system allows concrete production from each twin shaft mixer simultaneously
- › 2 different concrete types can be produced at the same time thanks to its 2 separately controlled and conducted weighing and mixing system
- › Possible to use mixer capacities varying between 1500/1000 l. to 9000/6000 l.



# OPTIONAL EQUIPMENTS



## COVERING OF CONCRETE BATCHING PLANT

Optional trapeze sheet covering minimize environmental effects of concrete production. Additional to environmental protection, it also protects batching plant from external effects (rain, dust, etc.). Trapeze sheet coverings and its structure are prepared as modular in VITA factories to be easily assembled on customer jobsite. According to customer request, it is also possible to cover aggregate storage bins, mixer block, transfer conveyor and aggregate automated feeding system (if any) separately/together.



## OPTIONAL UNITS FOR ALL SEASON OPERATION (HEATING SYSTEM AND ISOLATION)

All season operation equipments such as isolated covering, aggregate heating pipes, heaters and steam generator, makes it possible to produce concrete even in hard winter conditions. It is possible to produce concrete even in  $-40^{\circ}\text{C}$ .



## AGGREGATE STORAGE BINS LEVEL MONITORING SYSTEM

By means of the mounted camera on aggregate storage bins and the monitor in the operator's cabin, the concrete batching plant operator can

observe the aggregate level continuously and inform the loader operator about which material type should be loaded into which aggregate storage bins compartment.



## MOISTURE MEASURING SYSTEM

The amount of water that will be given into the mixer can be automatically adjusted by Moisture Measuring System which includes optional

"Microwave Type Moisture Measuring Probe" placed in the sand compartment of the aggregate storage bins. Measuring moisture content inside mixer is also possible with optional "Microwave Type Moisture Measuring Probe Inside Mixer".



## AUTOMATIC WASHING SYSTEM FOR MIXER

Concrete mixer can be easily and quickly washed and cleaned when concrete production stops or after the concrete production completed

at the end of the day by means of "Automatic Washing System for Mixer". To use automatic washing system extends the mixer life and provides significant savings in maintenance cost.



## GRID OVER AGGREGATE STORAGE BINS

Grid can be put over aggregate compartments to prevent the system against oversize stones inside the aggregate. It protects complete system from oversize

stones and other unwanted big materials.

*\* Please kindly contact with us for other optional equipments.*

# OTHER PRODUCTS

Stabilization Plants - Concrete Recycling Plant - Trailer Type Concrete Pumps



## MODELS

Stationary Stabilization Plant

Mobile Stabilization Plant

Concrete Recycling Plant

Trailer Type Concrete Pumps

# STATIONARY STABILIZATION PLANT



# 300 tons/h

## TECHNICAL SPECIFICATIONS

|                                   |                         |
|-----------------------------------|-------------------------|
| Capacity                          | 300 tons/h              |
| Aggregate Storage Bins Capacity   | 4 x 20 m <sup>3</sup>   |
| Aggregate Belt Feeders            | with frequency inverter |
| Aggregate Loading Type Into Mixer | Transfer Conveyor       |
| Mixer Capacity                    | 5000/ 2500 l            |
| Mixer Type                        | Continuous              |
| Cement Feeding Bin & Screw        | with frequency inverter |
| Water Feeding System              | with rational valve     |
| Material Holding Hopper           | 30 m <sup>3</sup>       |
| Control System                    | SIEMENS PLC             |
| Cement Screw Diameter (Ø)         | 220 mm                  |



# MOBILE STABILIZATION PLANT



# 300 tons/h

## TECHNICAL SPECIFICATIONS

|                                   |                         |
|-----------------------------------|-------------------------|
| Capacity                          | 300 tons/h              |
| Aggregate Storage Bins Capacity   | 4 x 20 m <sup>3</sup>   |
| Aggregate Belt Feeders            | with frequency inverter |
| Aggregate Loading Type Into Mixer | Transfer Conveyor       |
| Mixer Capacity                    | 5000/ 2500 l            |
| Mixer Type                        | Continuous              |
| Cement Feeding Bin & Screw        | with frequency inverter |
| Water Feeding System              | with rational valve     |
| Control System                    | SIEMENS PLC             |
| Cement Screw Diameter (Ø)         | 220 mm                  |



# CONCRETE RECYCLING PLANTS



# 10<sub>m<sup>3</sup>/h</sub>

## TECHNICAL SPECIFICATIONS

|                                      |                              |
|--------------------------------------|------------------------------|
| Capacity                             | 10 m <sup>3</sup> /h         |
| Maximum Aggregate Size               | 50 mm                        |
| Total Motor Power                    | 20 kW                        |
| Control Voltage                      | 24 V                         |
| Mobile Concrete Pump Washing Station | Optional                     |
| On Ground Water Tank                 | 20 m <sup>3</sup> (Optional) |



- ④ VITA Concrete Recycling Plants provide a cost saving advantage to the users in addition to protecting the environment.
- ④ By locating the Concrete Recycling Plant next to the concrete batching plant, the expenses of transferring the waste concrete to another place is eliminated.
- ④ The recycled aggregate generated from washing and decomposing of the concrete at the washing tank can be used again in concrete production with a certain percentage.
- ④ Recycled water-cement mixture can be re-used for concrete production without letting the cement precipitation by means of an agitator. This provides a significant water saving during concrete production.



# TRAILER TYPE CONCRETE PUMPS



## 45-60 m<sup>3</sup>/h

### TECHNICAL SPECIFICATIONS

|                                    |  |
|------------------------------------|--|
| Capacity                           | 45 m <sup>3</sup> /h or 60 m <sup>3</sup> /h |
| Maximum Delivery Distance          | 100 m (vertical)<br>300 m (horizontal)       |
| Diameter of Delivery Piston        | 180 mm                                       |
| Stroke of Delivery Piston          | 1000 mm or<br>1400 mm                        |
| Diesel Engine Power                | 85 kW  |
| Concrete Delivery Pressure         | 75 bar                                       |
| Maximum Hydraulic Pressure         | 320 bar                                      |
| Concrete Valve System              | S valf                                       |
| Oil Tank                           | 240 l or 300 l                               |
| Fuel Tank                          | 65 l or 80 l                                 |
| Diameter of Concrete Delivery Pipe | 5.5" (125 mm)                                |
| Dimensions                         | 5000 x 1800 x 2200 mm                        |



# AUTOMATED AGGREGATE FEEDING SYSTEM (OPTIONAL)

## For Square Type Aggregate Bins

Because of having square type aggregate storage bins (2 x 2) in mobile concrete batching plants and in some of compact concrete batching plants, 2-side concrete loading ramp should be built in order to load aggregate into aggregate storage bins.

As it is known, when it is compared to conventional concrete batching plants, mobile and compact type concrete batching plants can be easily moved to different jobsites. In contrast, it is not possible to move concrete loading ramps with the concrete batching plants. Thus, it is needed to make new concrete ramps in every new job-site. And this means extra cost for concrete producers. VITA offers a perfect solution for this problem: "Automated Aggregate Feeding System".

This system can be added to mobile or compact concrete batching plants having square type aggregate bins according to customer request optionally.

As seen from the picture above; Automated Aggregate Feeding System consists of loading bunker (See Image-1), transfer conveyor (See Image-2), rotating chute (See Image-3) and a control board. The aggregate which is loaded from zero ground can be easily transferred to selected aggregate compartment thanks to the transfer conveyor and rotating chute which is



## For Linear Type Aggregate Bins (Shuttle Type)



Bottom drive new distribution system with pneumatically activated flap

stopped in required positions by means of position switches. With Automated Aggregate Feeding System, it is possible to avoid from concrete ramp cost and to achieve more effective and easier aggregate loading.

Shuttle Type Automated Aggregate Feeding System is used for stationary concrete batching plants, some compact and mobile concrete batching plants which are having linear type aggregate storage bins.

In Shuttle Type Automated Aggregate Feeding System, aggregate is firstly loaded to the aggregate loading bunker then transferred by transfer conveyor to the shuttle type distributor conveyor which is located over linear type aggregate storage bins. Shuttle type conveyor fills aggregate into required aggregate compartment by stopping in required position by means of position switches.

# AUTOMATED AGGREGATE FEEDING SYSTEM (OPTIONAL)

## For Linear Type Aggregate Bins (Radial Type)



Radial Type Automated Aggregate Feeding System



Shuttle Type Automated Aggregate Feeding System

VITA Stationary Type Concrete Batching Plants and some of Compact Concrete Batching Plants are equipped with linear type aggregate bins. So concrete ramp behind aggregate bins should be built to be able to load aggregate into aggregate storage bins.

Especially in high capacity stationary type concrete batching plants, it is difficult and costly to catch the speed of concrete production by using aggregate loader which climbs over concrete ramp in every loading. In this situation Automated

Aggregate Feeding System is the best solution for effective aggregate loading. Besides, production area can be used more efficiently without making concrete ramp.

In Radial Type Aggregate Feeding System, aggregate is firstly loaded into aggregate loading bunker then transferred to required aggregate compartment by transfer conveyor which can move on a radial line on the ground to be able to fill the selected aggregate compartment.

## COMPONENTS

VITA goes on its technological, quality and reliable concrete batching plant manufacturing principle by using parallel ways:

- High manufacturing culture
- Choosing reliable, heavy duty, long lasting and proper components

Selection of high quality components guarantees the reliability of the equipments and ensures the maintenance of the fundamental features of the material. VITA prefers efficient, durable and having wide service network components in its concrete batching plants. Also, reliability of these components has been tested by VITA since 1975.

Component selection requires high experience and knowledge.

Some of the brands of components are given below which are being used in VITA equipments;

SIEMENS

WAMGROUP

brevini  
riduttori  
PLANETARY REDUCERS

BONFIGLIOLI  
Power & Control Solutions

LINCOLN  
INDUSTRIAL

HARDOX®

JOTUN

ABB

Telemecanique  
GROUPE SCHNEIDER

Atlas Copco

PIRELLI

LAUMAS®  
ELETTRONICA

FESTO

SEW  
EURODRIVE



# AUTOMATION SYSTEM



The automation of VITA Concrete Batching Plants is provided by control panel located in the operator cabinet which has a wide visual angle and is isolated for various climate conditions. Automatic or manual concrete production can be made by control board which is equipped with SIEMENS PLC and SIEMENS TOUCH PANEL. While the whole concrete production process can be followed easily thanks to the synoptic diagram on the control panel, weighing of aggregate, water, cement and additive can be followed by the indicators on control panel.

In VITA Concrete Batching Plant Automation System, computer system is given as standard and it consists of PC, printer, UPS and VITA Concrete Production Software.

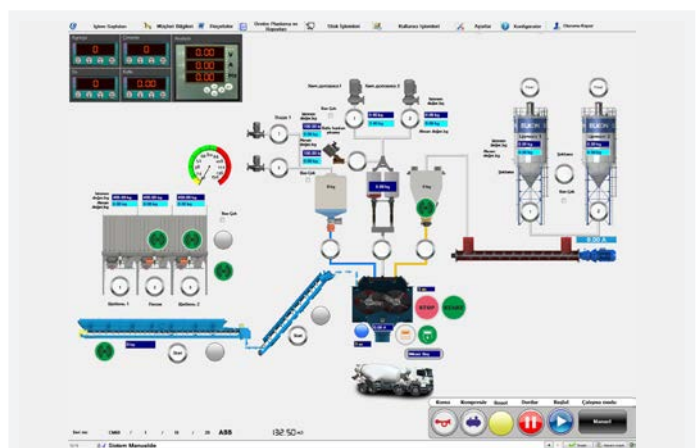
Some specifications of VITA Concrete Production Software are;

- Recording unlimited number of receipts and use them in fully automatic concrete production.
- Provides flexible concrete production by offering changing ability of many parameters for different requirements.
- The informations which belong to customer, truckmixer, driver, operator, job-site etc. can be recorded as per delivered concrete.
- Possibility to get daily, weekly, monthly or any desired intervals of concrete production report. Raw material input and consumed amount can be reported.

- Concrete slump values can be monitored as digital and as analog.
- Required quantities written in the receipt and the actual production can be monitored.
- All concrete production including manual concrete productions can be recorded.
- All of the errors which may occur during production are displayed to the operator as a warning message and recorded in system history.
- Required interfere to the automation system of concrete batching plant can be done by remote connection via Internet.
- "Custom design delivery note" can be designed according to customer request and printed.

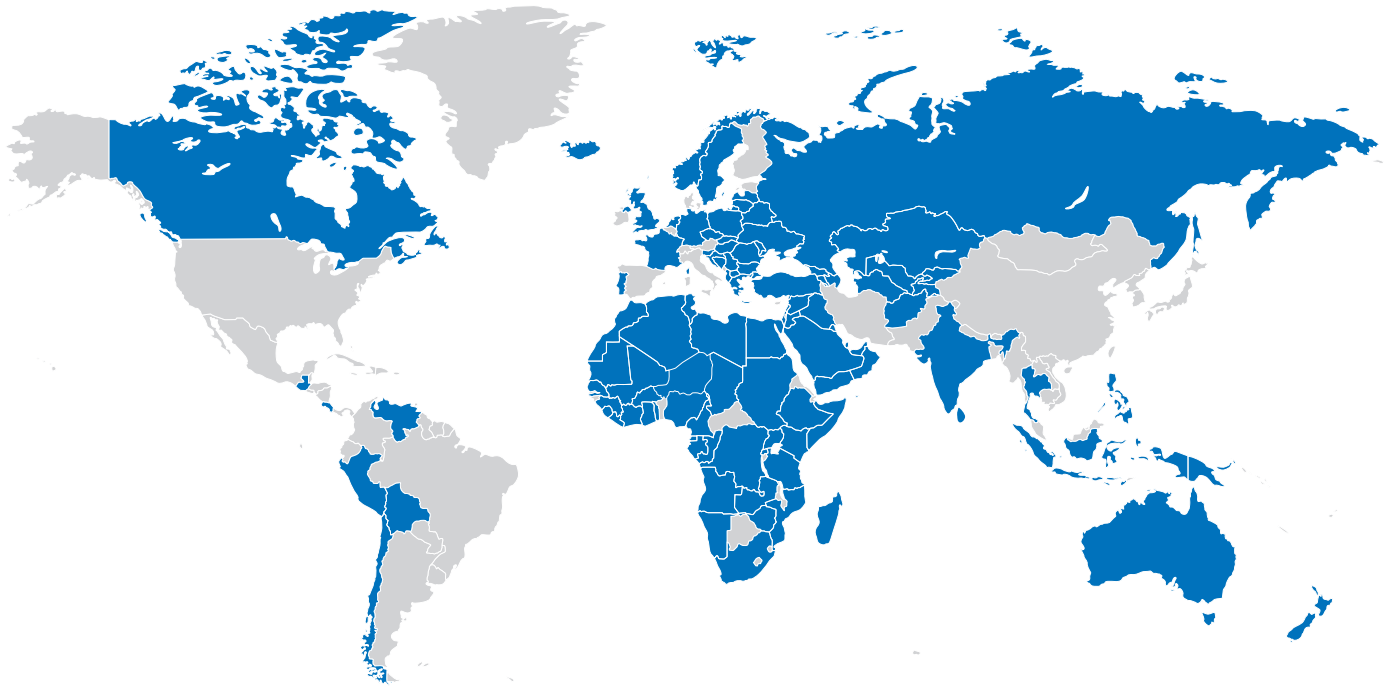
There are contactors, switches, TMS, fuses and phase protection relays inside the power board which is a part of the automation system. The brand of all these components is SIEMENS and they provide reliable operation of the equipment. The properties of power board and protection elements are completely comply with EU standards.

All required technical documentations (operating manual, electrical projects etc.) are given together with Automation System of VITA Concrete Batching Plants as standard.



# TOP REFERENCES

---



**3500 CONCRETE BATCHING PLANTS OVER 120 COUNTRIES IN 6 CONTINENTS**

**STRABAG**

**VINCI**  
CONSTRUCTION

**LafargeHolcim**

**AG ANDRADE GUTIERREZ**

**melón**

**Balfour Beatty**

**Italcementi**  
HEIDELBERG CEMENT GROUP

**Van Oord**  
Marine ingenuity

**bam**

**EIFFAGE CONSTRUCTION**

**CRH**

**Morrison Construction**

**H HARBERT INTERNATIONAL**

**KBR**

**CCC**

**SAUDI OGER LTD.**  
شركة سعودي أوجيه المحدودة

**RENAISSANCE CONSTRUCTION**

**HYUNDAI**  
ENGINEERING & CONSTRUCTION

**DAEWOO E&C**

**Hanwha**

**SSANGYONG**

**Chevron**

**NEWCREST**  
MINING LIMITED

**DANGOTE**

**COSTAIN**

**oas**

**MHC**  
SOLIMAN BIN SALEH ALMOHILEB & HIS SONS HOLDING COMPANY

**GAZPROM**